

Digital Dryers Maintenance Parts and Kits

Maintenance Parts for Model 22000-33000 Digital Dryers

Product Catalog

Issue 2



Maintenance Parts for Model 22000-33000 Digital Dryers



12-Month Maintenance Kit
Radiodetection part no. 100495
Replacement filters, silencer and o-ring.



Air filter - fiberglass
Radiodetection part no. 0040151001
Air filter – fiberglass.



24-Month Maintenance Kit
Radiodetection part no. 100496
Replacement filters, silencer, o-ring, solenoid valve, brass adaptor and 3-way valve.



Spare air filter
Radiodetection part no. 36565
Spare air filter (contained within the 12/24 month maintenance kits).



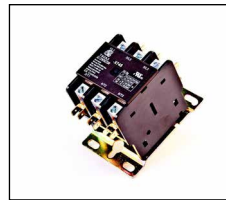
Replacement silencer / bypass muffler
Radiodetection part no. 0022646003
Replacement silencer / bypass muffler.



Spare 3-way eject valve
Radiodetection part no. 36785
Spare 3-way eject valve (contained within the 12/24 month maintenance kits).



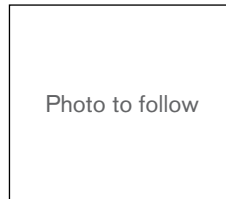
Line pressure regulator diaphragm
Radiodetection part no. 104284
10PSIG 1/8" NPT wingnut. Preventative maintenance recommended replacement every 7-10 years.



Input current contactor for the compressor
Radiodetection part no. 103634
Input current contactor for the compressor, 40A 208/240V coil version.



Water float shutdown tube
Radiodetection part no. 41806
Check performance annually and replace if needed.



Water filter o-ring
Radiodetection part no. 0014000237
Water filter o-ring, change this following every water filter change.

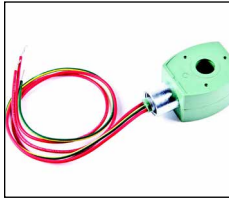


Repair kit for the purge valve
Radiodetection part no. 0024815016
Repair kit for the purge valve.

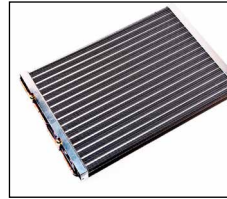


Polypropylene ball-check
Radiodetection part no. 0015903008
Polypropylene ball-check.

Maintenance Parts for Model 22000-33000 Digital Dryers



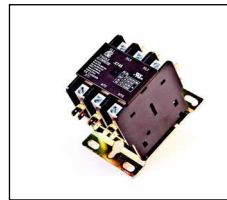
Solenoid coil (240V, 60Hz)
Radiodetection part no. 0019525008
Solenoid coil (240V, 60Hz).



Spare heat exchanger
Radiodetection part no. 102657
Spare heat exchanger. On/off switch for the compressor, used for protecting compressors against high current.



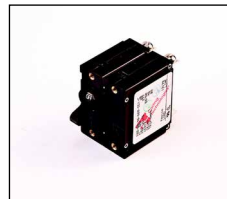
Capacitor for fan
Radiodetection part no. 0040506002
Capacitor for fan.



Input current contactor for the compressor
Radiodetection part no. 103634
Input current contactor for the compressor, 40A 208/240V coil version.



Motor, medium 5" shaft fan
Radiodetection part no. 0040507002
Motor, medium 5" shaft fan.



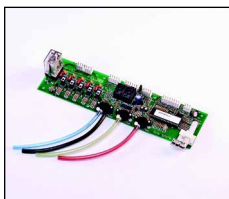
Circuit-breaker on/off switch for the compressor
Radiodetection part no. 40342
Circuit-breaker on/off switch for the compressor, protects compressors against high current (FOR 22000ST ONLY).



Solenoid valve
Radiodetection part no. 0043512001
Solenoid valve.



Circuit-breaker on/off switch for the compressor
Radiodetection part no. 40343
Circuit-breaker on/off switch for the compressor, protects compressors against high current (FOR 33000ST ONLY).



Programmed sensor control PCB
Radiodetection part no. 100529
Programmed sensor control PCB.



Programmed ATS interface PCB
Radiodetection part no. 100530
Programmed ATS interface PCB.



1/2" port regulator
Radiodetection part no. 40437
1/2" port regulator.

Maintenance Parts for Model 22000-33000 Digital Dryers



Ballseat

Radiodetection part no. 40872

Ballseat.



Pump - major repair kit

Radiodetection part no. 47328

Pump – major repair kit – rotor, port-sleeve, seals and gasket.



Standard 3/4" check valve in the dry air outlet

Radiodetection part no. 41125

Standard 3/4" check valve in the dry air outlet to the cable (prevents backflow of dry air into the redundant dryer).



On-off rocker-switch

Radiodetection part no. 97901

On-off rocker-switch for the dryer.



Port-sleeve for the pump

Radiodetection part no. 44635

Port-sleeve for the pump.



High-temperature sensor for the heat-exchanger

Radiodetection part no. 97919

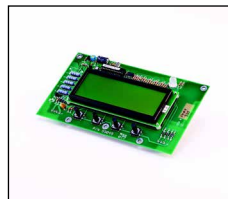
High-temperature sensor for the heat-exchanger. Turns fan on if over 90°F.



Low-water shutdown float

Radiodetection part no. 45347

Low-water shutdown float.



Digital LCD PCB assembly

Radiodetection part no. 99045

Digital LCD PCB assembly, this plugs directly into the interface and sensor board.



High-water shutdown float

Radiodetection part no. 45348

High-water shutdown float.



Water ring compressor DC12

Radiodetection part no. 32679A

Water ring compressor DC12 (for the 22000ST model only).



Pump - minor repair kit

Radiodetection part no. 47325

Pump – minor repair kit. Port-sleeve, seals and gasket.



Water ring compressor DC20A

Radiodetection part no. 32098A

Water ring compressor DC20A (for the 33000ST model only).

Global locations

Radiodetection (USA)

28 Tower Road, Raymond, Maine 04071, USA

Tel: +1 (207) 655 8525 Toll Free: +1 (877) 247 3797 rd.sales.us@spx.com www.radiodetection.com

Pearpoint (USA)

39-740 Garand Lane, Unit B, Palm Desert, CA 92211, USA

Tel: +1 800 688 8094 Tel: +1 760 343 7350 pearpoint.sales.us@spx.com www.pearpoint.com

Radiodetection (Canada)

344 Edgeley Boulevard, Unit 34, Concord, Ontario L4K 4B7, Canada

Tel: +1 (905) 660 9995 Toll Free: +1 (800) 665 7953 rd.sales.ca@spx.com www.radiodetection.com

Radiodetection Ltd. (UK)

Western Drive, Bristol, BS14 0AF, UK

Tel: +44 (0) 117 976 7776 rd.sales.uk@spx.com www.radiodetection.com

Radiodetection (France)

13 Grande Rue, 76220, Neuf Marché, France

Tel: +33 (0) 2 32 89 93 60 rd.sales.fr@spx.com <http://fr.radiodetection.com>

Radiodetection (Benelux)

Industriestraat 11, 7041 GD 's-Heerenberg, Netherlands

Tel: +31 (0) 314 66 47 00 rd.sales.nl@spx.com <http://nl.radiodetection.com>

Radiodetection (Germany)

Groendahlscher Weg 118, 46446 Emmerich am Rhein, Germany

Tel: +49 (0) 28 51 92 37 20 rd.sales.de@spx.com <http://de.radiodetection.com>

Radiodetection (Asia-Pacific)

Room 708, CC Wu Building, 302-308 Hennessy Road, Wan Chai, Hong Kong SAR, China

Tel: +852 2110 8160 rd.sales.asiapacific@spx.com www.radiodetection.com

Radiodetection (China)

13 Fuqianyi Street, Minghao Building D304, Tianzhu Town, Shunyi District, Beijing 101312, China

Tel: +86 (0) 10 8146 3372 rd.service.cn@spx.com <http://cn.radiodetection.com>

Radiodetection (Australia)

Unit H1, 101 Rookwood Road, Yagoona NSW 2199, Australia

Tel: +61 (0) 2 9707 3222 rd.sales.au@spx.com www.radiodetection.com